

ShoreScore Update

May 2013

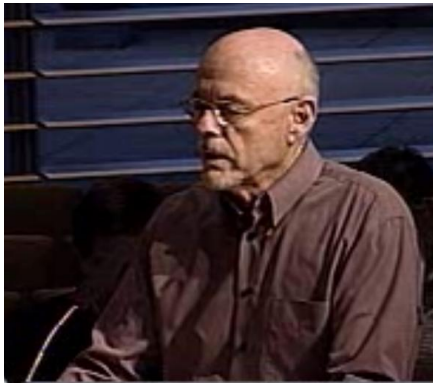


SMP Heads to City Council

The Planning Commission's draft Shoreline Management Program will be delivered to the City Council this month. WSSA representatives used this week's Council meeting to highlight WSSA's involvement and its concerns. Board member Marty Nizlek, WSSA's attorney, and Dr. Gil Pauley addressed the Council, each delivering a 3 minute summary of WSSA's efforts. ([Click here](#) for the video link¹).



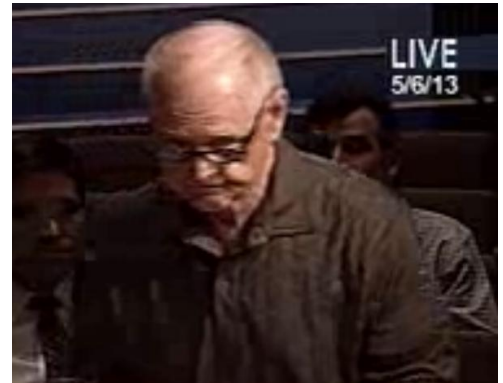
Bellevue City Council Meeting May 6, 2013



Martin Nizlek – Resident & WSSA
Board Member



Charles Klinge – WSSA Land Use
Attorney



Dr. Gilbert Pauley, Retired Fisheries
Professor

Marty Nizlek acknowledged the efforts of the Planning Commission in developing the draft, but he pressed the Council to consider changes to portions of the program. He pointed out that the health of the lakes and their shorelines is dependent on what flows into them – that the City, County, and even the State can better manage drainage dumped to the lakes as well as improving lake outflow channels.

¹ See "Communications – Written and Oral" at 21 minutes into the Council proceedings.

Dr. Pauley called attention to his review of the City's scientific studies that initially guided the Planning Commission. As he did at WSSA's March 2010 forum, Prof. Pauley reiterated that the studies' recommendation for large woody debris (and trees) on lake shores was a misapplication of stream science. He added that endangered salmon don't inhabit shorelines and merely traverse the lakes in route to and from their breeding grounds on tributary streams.

WSSA attorney, Charlie Klinge of GSK Legal in Bellevue, summarized the features contained in the SMP, describing their similarity to adopted requirements in other jurisdictions. He concluded his remarks suggesting that the Council members would find WSSA's Background documents, previously provided them, and would provide an excellent summary of the residential group's efforts over the last four years.

The Council listened to the input from WSSA but, as is customary, took it under advisement without questions or discussion. Discussion is anticipated when they formally receive the draft from the Planning Commission. At that time, the Council will discuss the proposed program and will need to decide how to proceed. In most instances in other cities, changes may or may not be made prior to approving a final version to be sent to the State's Department of Ecology for its review.

As this issue of *ShoreScore* went to press, we've been informed that the Council will receive the draft SMP on Tuesday May 28th at their Study Session. These meetings begin at 6PM at City Hall and are open to the public. Your attendance will send a very strong message to the Council.

Lake Drainage Issues Update

As we've reported previously, Lake Sammamish and Phantom Lake water levels have suffered from inadequate maintenance of their outflow channels. Our December *ShoreScore* issue ([Click here](#) to review²) reported that conditions were stable late in 2012. Though we had what seemed a long, wet winter, rainfall patterns were forgiving. Intense rainfall periods (greater than 1 inch per day) were rare and water levels, though still above long-term norms, were lower than in recent years.

Phantom Lake residents have supplemented the City's August 2011 maintenance of the lake's outlet to Phantom Creek. Their efforts to monitor and clear the channel, coupled with this year's lighter rain patterns than the last several years, have avoided a repeat of lake levels shown here in 2010.



Artificially high water level on Phantom Lake (2010)

² Back issues of WSSA *ShoreScore Updates* are available at our homepage and can be accessed by [clicking here](#).

Phantom's property homeowners continue to discuss needed actions to protect the lake and its shores; among these is management of lily pad infestations, as shown below. The rapid increase in lily pads may be due to warmer and nutrient rich runoff directed to the lake. (See "Storm Drains", below.)



Learning that the City was contracting to thin the lily pads at Robinsglen and Greenbelt parks, PLHO board members hoped residents could participate as well. Unfortunately, City Parks staff has informed them that the permits obtained to do the lily pad thinning for City park properties do not extend to private property owner actions.

On Lake Sammamish, WSSA board member Marty Nizlek, who has monitored lake outflow conditions for several years, reports slow progress on sediment removal at Marymoor Park's weir and outlet channel. While King County has agreed to remove accumulated debris, cost estimates being discussed are prohibitive. Estimates provided by the County exceed \$500,000. Surprisingly, at least half of the cost would be to "*mitigate the environmental impacts and loss of wildlife habitat*" now present in the flood channel (according to permit language).



Storm drains carry a dangerous cocktail into all of our lakes that far exceeds shoreline property pollution. This recent photo shows grass clippings left in the street near Tillicum Middle School by municipal workers.

Flushed directly to our lakes, these will act as nutrients and lead to a reduction in oxygen levels needed by fish. Lake in-fill will occur and, worse, clippings, including those left by City workers, carry undesirable chemicals used to keep grass green and weed free. WSSA continues to push for closer monitoring of this situation.

Concerns Raised about Bear Creek Project in Redmond

A new project in Redmond has raised WSSA's concerns. Changes will be made to Bear Creek by Redmond which may impact Lake Sammamish outflow. An illustration of the projected reconfiguration (which is similar to one being proposed through Marymoor Park below the weir) is shown below.



Example of Bear Creek Re-Meander Project

Board member Marty Nizlek has reviewed an engineering consultant study for this *soon-to-be-constructed* project. He found forecasts of increased flows from Bear Creek at its Sammamish River confluence. Such increases could reduce flow from the Lake Sammamish, since both Bear Creek and lake flow (through Marymoor Park's "slough") must merge to limited downstream river capacity. Nizlek notified Redmond, King County, and the Corps of Engineers of his concerns. His letter can be found online by [Clicking Here](#).

As this ShoreScore went to press, King County has proposed a meeting to discuss these issues. Neither Redmond nor the Corps of Engineers has responded.

Your Support

Thank you to all who've kept WSSA's efforts moving forward. Your continued support is appreciated and needed as the SMP moves to the next stage and we deal with issues such as Bear Creek impacts.

Send a check made payable to WSSA at PO Box 6773, Bellevue 98008 or via PayPal at [WSSA's Homepage](#).